



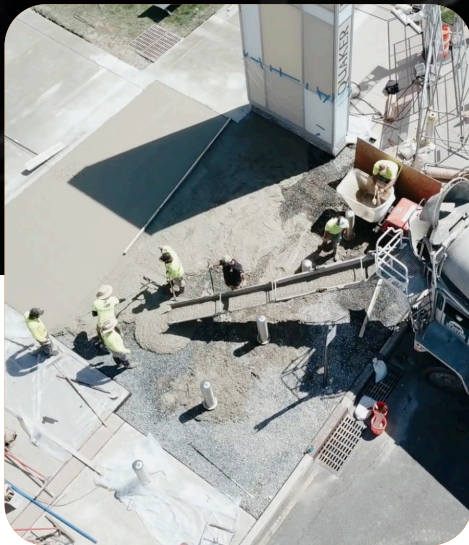
APRIL 23
www.trustswan.com

UNLOCK THE POWER OF PLANNING

For Capital Improvement Projects in 2023

As a property manager, you know how crucial it is to keep your property in tip-top shape. Large-scale capital improvement projects like repaving and concrete work are essential to maintaining the value and function of your property.

But how can you ensure that these projects go smoothly, stay within budget, and minimize disruption to tenants? The answer lies in meticulous planning!






"Trusted Pavement Partner For
Property Management Professionals"

SWAN CO.
ASPHALT & CONCRETE

Meticulous Planning Equals Perfect Paving

In our [March 2023 blog post](#), we explored the importance of thorough planning for perfect paving projects. **The same principles apply to other large-scale concrete projects** like loading dock replacements and drainage installations. With our careful planning, your capital improvement projects can:

-  Stay organized and manage the many moving parts of a project
-  Control costs and avoid unexpected expenses
-  Minimize downtime and disruptions to your property



Upcoming Events:

CONNECT WITH US!

Want to chat with us face-to-face? We're excited to meet you at the following events:



1. Simon Youth Foundation Tee Off for Education at TopGolf Philadelphia. **May 17th, 1-4 pm**
2. The Cooperator Expo NJ at Meadowlands Exposition Center. **June 7th, 10 am - 4 pm**
3. Mid-Atlantic Buildings & Facilities Management Trade Show in Edison, NJ. **Date TBD**
4. Meet someone from our team at the monthly BOMA NJ meetings.

Mark your calendars, and be sure to stop by and say hello! We'd love to discuss your upcoming capital improvement projects and explore how we can help.

 Kimberley Swanekamp

 @trustswanco

 www.trustswan.com

COOPERATOREVENTS
NEW JERSEY EXPO



BOMA
NEW JERSEY

SYF Simon Youth
Foundation